

Uniform Gazetteer Add-In



Installation & User Guide

1. Introduction

The Uniform Gazetteer Add-In provides the ability to connect to Uniform gazetteer connectors.

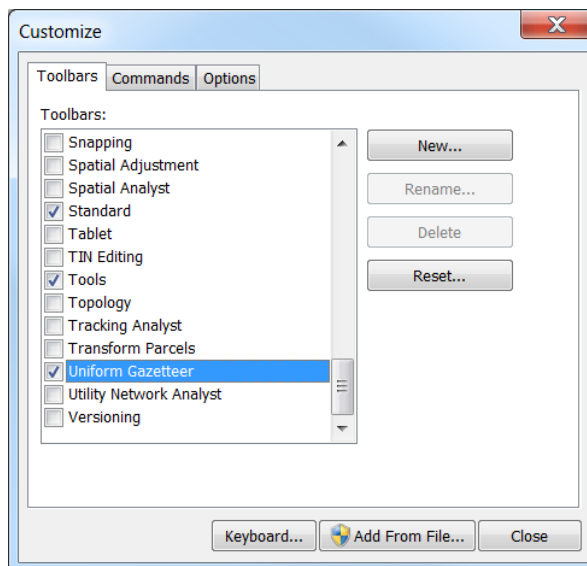
It adds a toolbar into ArcMap, called 'Uniform Gazetteer'.

The add-in has been built to work with ArcGIS for Desktop v10.1 and above.

2. Install the Add-In

Download the Uniform Gazetteer Add-In from the Esri UK website (<http://www.esriuk.com/>) then follow the installation instructions:

1. Make sure ArcMap is closed and that you have removed any previous version of the Services Add-In (for details of how to do this see section 7)
2. Double click on the file 'UniformGazetteerAddin.esriAddIn'
3. Open ArcMap
4. Open the 'Customize' menu and choose 'Add-In Manager'
5. Confirm that the Add-In has been installed with the anticipated version number
6. On the toolbars tab, tick **Uniform Gazetteer** in the list of toolbars:

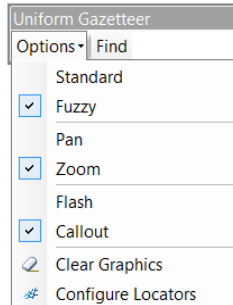


7. The Uniform Gazetteer toolbar will now be displayed in ArcMap (although no connections have been setup yet):



3. Options

The Uniform Gazetteer toolbar has a drop-down menu with several options:

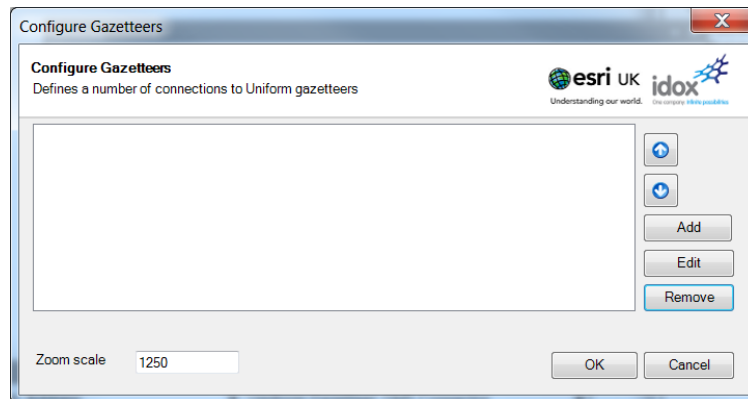


- **Standard or Fuzzy**
Standard searches do not provide any fuzzy tolerances. Fuzzy searches provide tolerance for spelling mistakes in the input query.
- **Pan or Zoom**
Select the navigation method to move the map to the searched location.

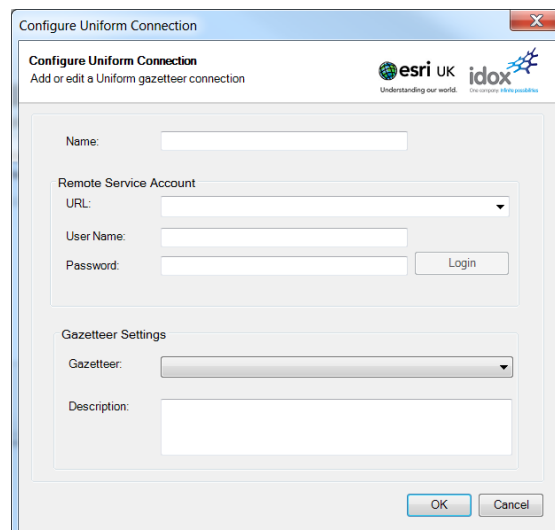
Note that Zoom does not work with address locations; it is only relevant to area/polygon features such as map sheet references. If the Zoom setting is ticked and an address is located, the map pans to the location without a scale change.
- **Flash or Callout**
Options to select whether a graphic and callout will be added to the map or a marker is flashed at the matched location.
- **Clear Graphics**
Removes the graphics and callouts from searched locations.
- **Configure Locators**
Select this option to add or modify a gazetteer.

4. Configuring Locators

1. On the Uniform Gazetteer toolbar, click **Configure Locators**, which opens the dialog below:

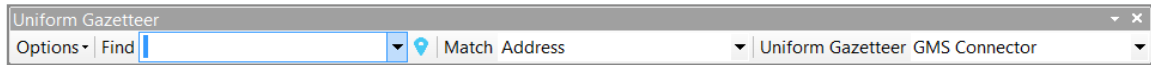


2. Click **Add** to define a new locator, which opens the following dialog:



3. Type a **Name** for the locator. This is how it will be displayed in the list on the toolbar.
4. Enter the URL and if relevant (ie a secured service) provide the user name and password used to access the service.
5. Click **Login**, if the connection details are correct this will populate the Gazetteer drop down list with available gazetteers.
6. Select the gazetteer you wish to connect to from the drop down list.
7. Click **OK** to close the dialog.

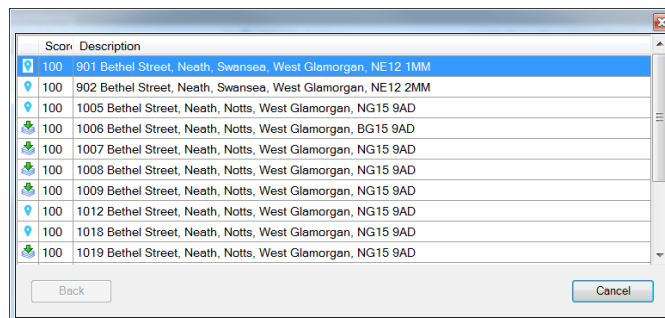
8. You can then set the scale you wish to zoom to if appropriate for point features.
9. The new locator will now be listed in the toolbar. For example:



5. Searching for a Location

After configuring a locator, you can use it to search for a location:

1. Using the **Match** drop down select the level you wish to search eg Address, Street etc
2. Enter the search criteria into the **Find** box. The search text should be appropriate for the match type, e.g. a postcode for one with a Postcode target and a street for one with a Street target.
3. Click the **Search** button immediately to the right of the text (blue balloon icon).
4. If there is a single match (e.g. a postcode), it will be pinpointed on the map. If there are multiple matches, a pick list will be displayed; double click on an entry in the pick list to locate it on the map:



5. Where a point or callout are added they will be added in to the default graphics layer.

6. Removing the Add-In

To remove the Services Add-In follow the below steps:

1. Start ArcMap
2. Open the 'Add-In Manager' by choosing it from the 'Customize' menu
3. Select the Uniform Gazetteer Add-In and click 'Delete this Add-In'
4. Restart ArcMap for the deletion to take effect